



CARE Research LLC

Combining Compassion and Quality

Pre-clinical Expertise

Efficient | Accurate | Responsive

Project Highlights

Surgical Tissue Adhesive Study

CARE completed a study in pigs that demonstrated the equivalency of a novel tissue adhesive compared to the predicate material using our well equipped surgery suite.



CARE surgical suite with C-ARM

Kidney Catheterization

This model has been used to serve clients seeking to correlate the urine excretion rates of active drug and metabolites and relate them to concomitant drug plasma levels as a time sequence of PK. The model consists of individual ureter intubation of each kidney and quantitative collection of the urine volume and pH monitoring. The tubes are externalized through the rat's back muscle and each individual aliquot (time series) is collected in a small vial while the animals are engaged in normal activity (including overnight and well into the next day) after recovery from surgery.



Custom built harnesses with attached cryovials that are used as receptacles for the urine from each individual rat ureter.

Toxicology Studies

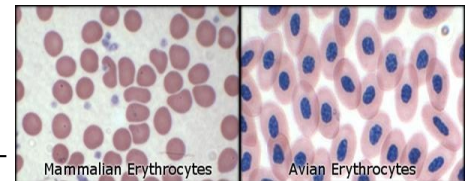
CARE completed several toxicology studies for a sponsor that involved daily oral gavage of a large number of animals of various species.

Due to the close relationship that CARE has with Colorado Histo-Prep (histopathology www.histoprep.com) we were able to offer accelerated project scheduling to our client thus significantly shortening the developmental cycle.



Avian Blood Research

Our team has completed the avian blood study, started in 2011, with significant findings. We were able to develop a special technique to analyse the blood components. CARE is one of the few labs in the country that is able to manually count and quantify avian red blood cells under GLP conditions.



Differences between mammalian blood and avian blood .

Why CARE?

- Complete FDA audit - No 483 issued with accolades to documentation and procedures
- Expertise in DART studies (Developmental and Reproductive Toxicology)
- Exceptional team with proven integrity and accountability
- Expertise in protocol development and regulatory guidance